

PERON

DATASHEET | SPECIFICATIONS



SPECIFICATIONS

ELECTRICAL PARAMETERS

Light source	» LED
Power voltage	» AC 230 V / 50 Hz
Connection method	» cable out
Ballast part	» electronic driver
Emergency module	» NO

LIGHT PARAMETERS

Optical system	» narrow beam (C) » wide beam (D) » aperture (S)
Light distribution	» direct
Colour rendering index	» Ra > 80
Colour temperature	» 3 000 K
Service life	» > 60 000 hrs. (L80B20)

CONSTRUCTION

Luminaire body	» powder-coated steel sheet
Colour	» metallic gray, other RAL (on request), exterior finish (V)
Surface type	» gloss
Luminaire cover	» safety glass (X)

SAFETY

Protection class	» I, II
Maximum ambient temperature	» max. -30 / +50 °C
Protection of the luminaire's electrical part	» IP 65
Protection of the luminaire's optical part	» IP 65
Mechanical durability	» IK 10
Mounting on normally flammable surfaces	» YES

MOUNTING

Method	» suspension (Z) » surface mounted*
Recommended height	» from 3 to 8 m

ACCESSORIES

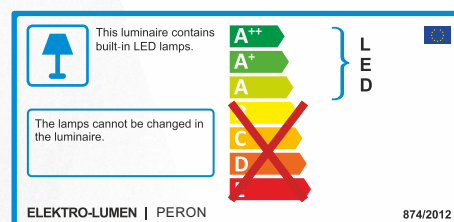
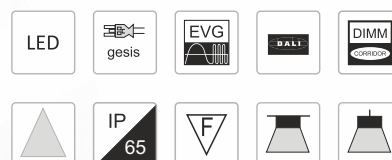
Clips	» NO
Suspension accessories	» suspension hooks » *mounting kit for surface mounting (on request)

CHARACTERISTIC

Special LED luminaire designed for railways with an optical system for low spaces equipped with tempered glass.

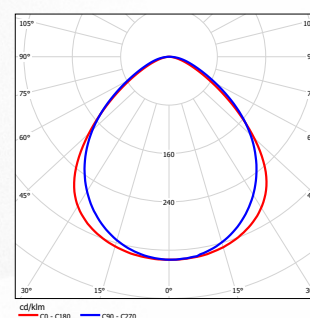
USE

railway areas entrance hall
underpasses



LIGHT DISTRIBUTION CURVE

PERON 3 DXS 2x6 830



VARIANTS

DATASHEET PERON

TYPE	POWER	LUMINOUS FLUX	COLOR TEMPERATURE	SERVICE LIFE	WEIGHT
Name	Watt (W)	Lumen (lm)	Kelvin (K)	L90B10 (hrs.)	Kilogram (kg)
suspension / surface mounted (Z)					
PERON 3 Uxx 2k6 730 B124	15	2 600	3 000	> 100 000	6,5
PERON 3 Uxx 4k0 730 B124	23	4 000	3 000	> 100 000	6,5
PERON 3 Uxx 6k0 730 B124	35	6 000	3 000	> 100 000	6,5
PERON 4 Uxx 8k0 730 B124	45	8 000	3 000	> 100 000	8,5
PERON 4 Uxx 10k0 730 B124	57	10 000	3 000	> 100 000	8,5
PERON 4 Uxx 12k0 730 B124	70	12 000	3 000	> 100 000	8,5

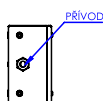
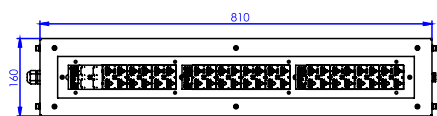
LEGEND

PERON 3 Uxx 2k6 830 V B124

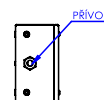
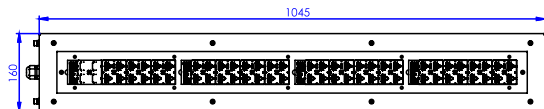
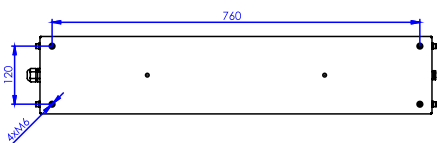
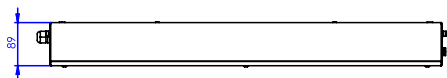
	name
	length
	optical system
	luminous flux 2 600 lm
	color rendering index Ra > 80, color temperature 3 000 K
	exterior finish (V)
	LED module

Optical and electrical parameters tolerance $\pm 10\%$

DIMENSIONS



PERON 3



PERON 4

